



DANGER LIVE BUSBARS
ISOLATE SUPPLY BEFORE
REMOVING COVERS. D57A

MEG
In 1250 A - ET
IEC / EN 60947

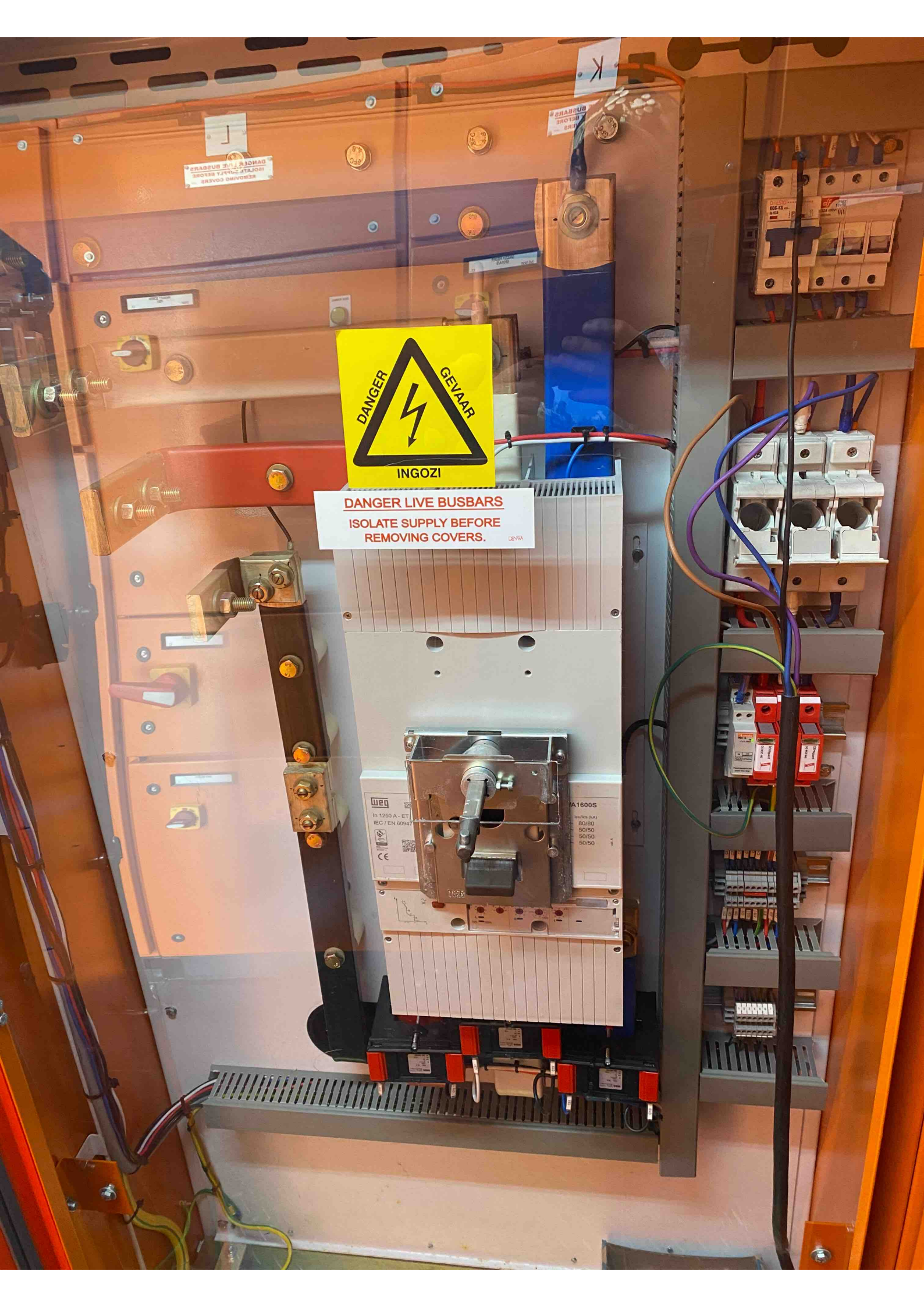
TA1600S

Mod/In (kA)
80/60
50/50
50/50
50/50

DANGER LIVE BUSBARS
ISOLATE SUPPLY BEFORE
REMOVING COVERS

DANGER LIVE BUSBARS
ISOLATE SUPPLY BEFORE
REMOVING COVERS

K









Terminal block with multiple wires connected to various components.

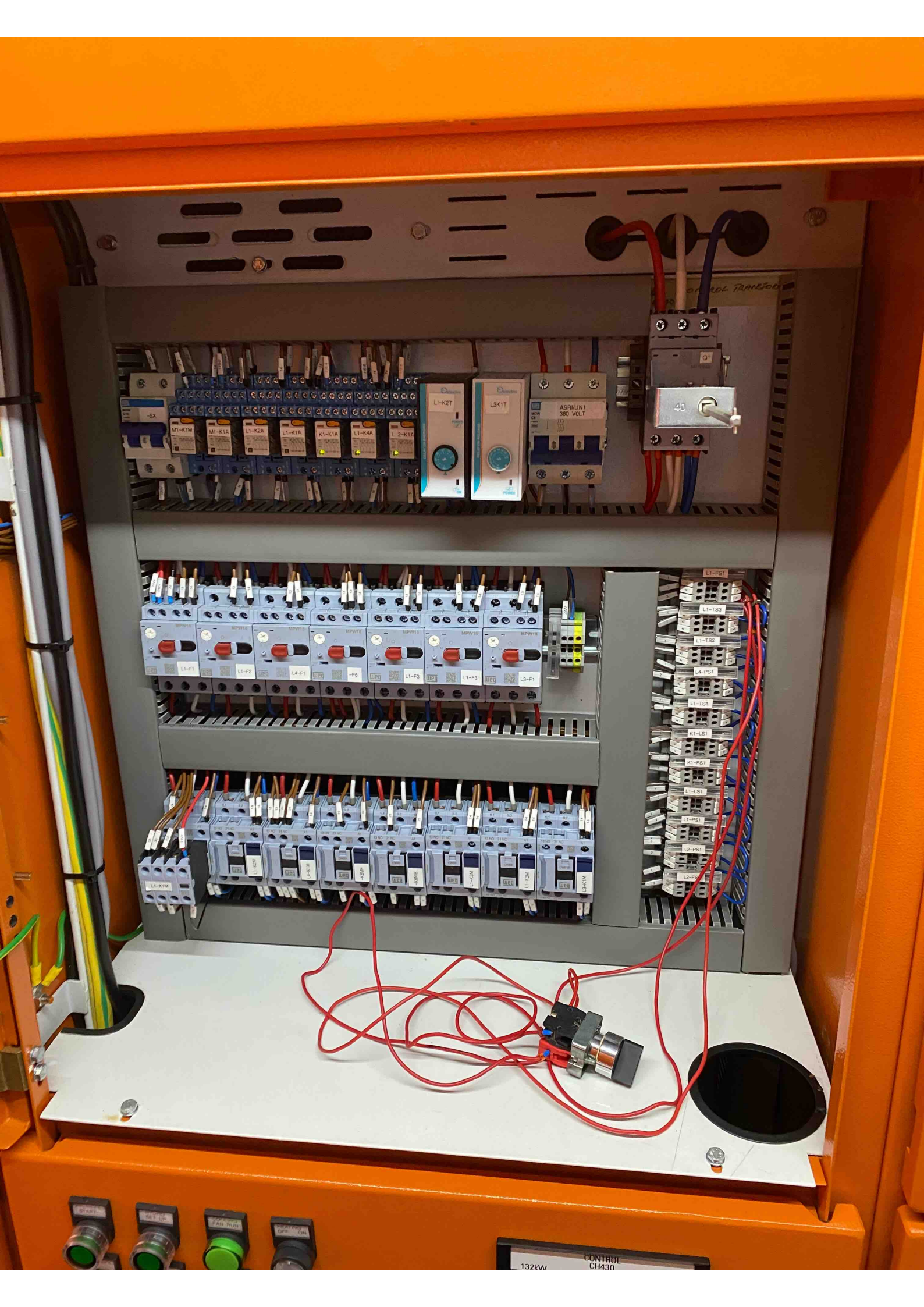
Relay assembly with two relays and a terminal block.

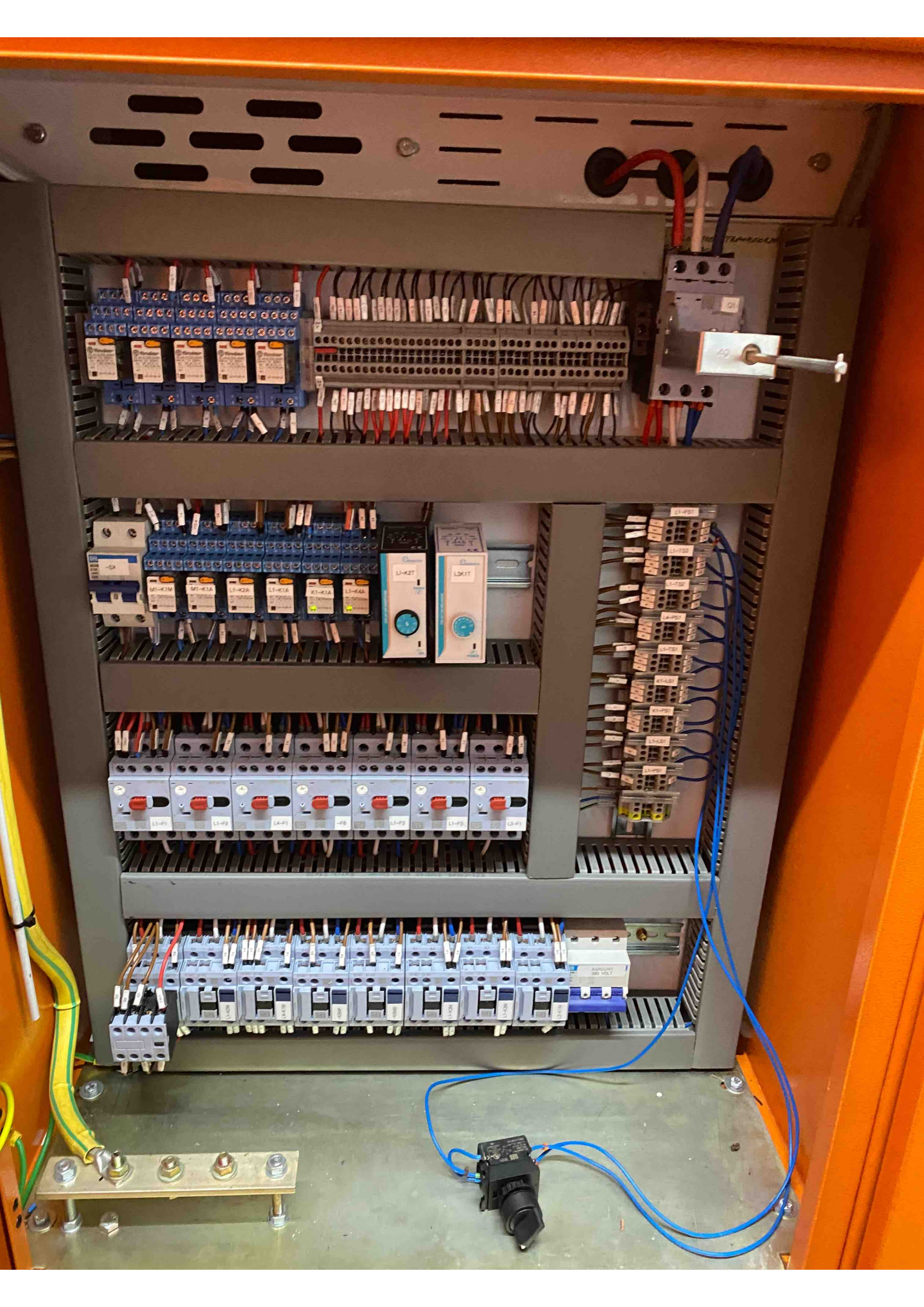
White relay assembly with a terminal block and a red wire.

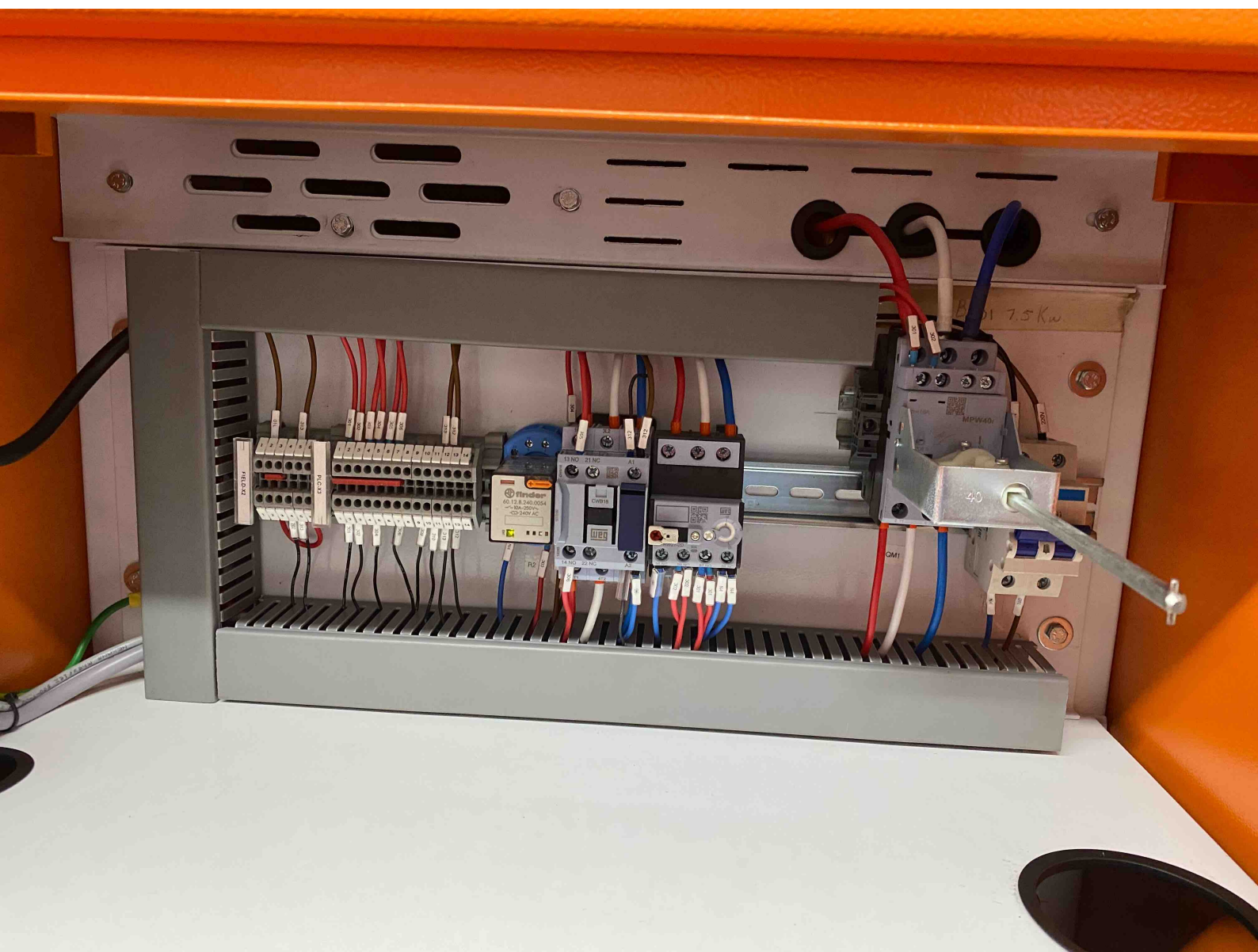
White transformer with two yellow knobs and a label.

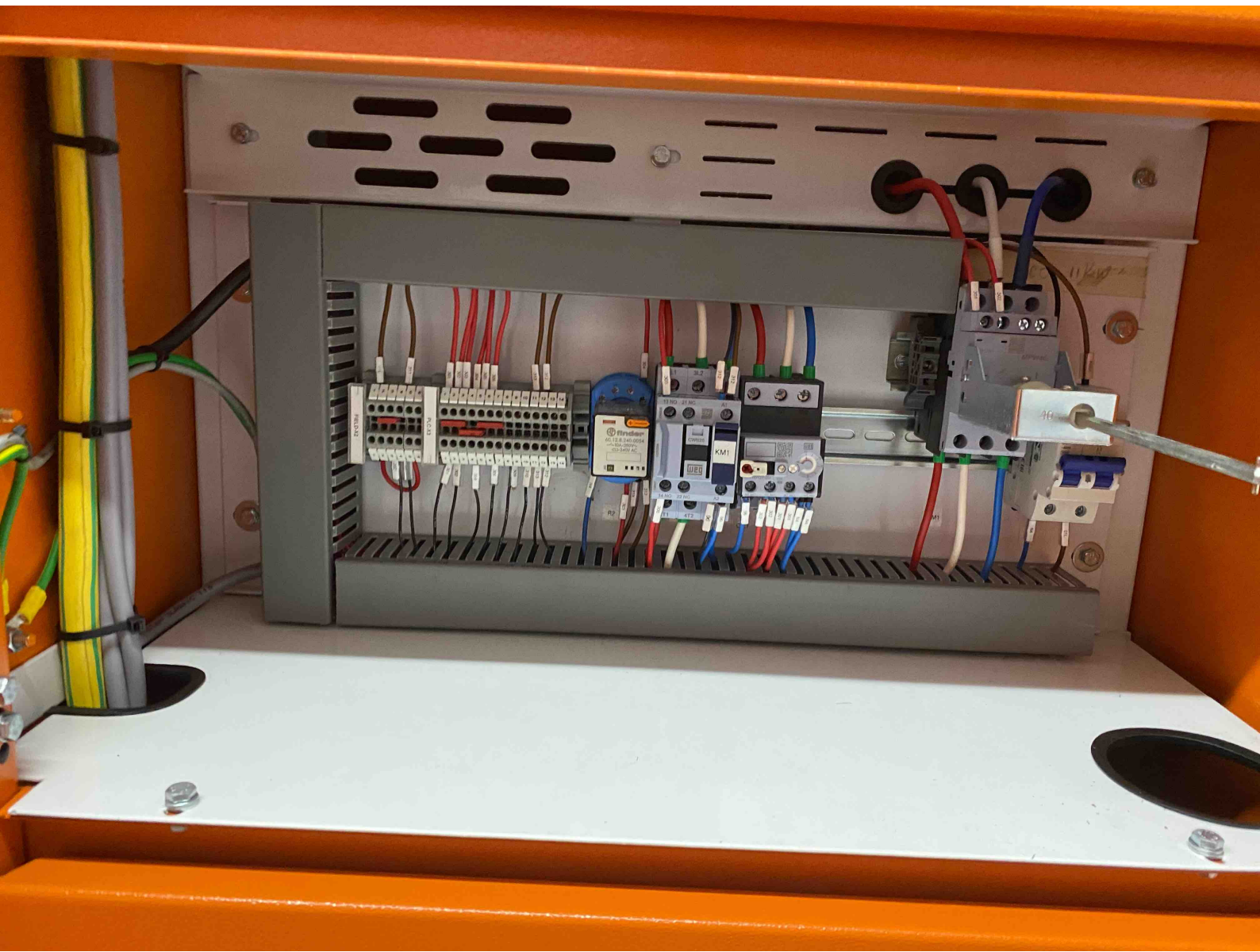
Large grey and blue inverter unit with a terminal block on top and a 'MEG' logo.

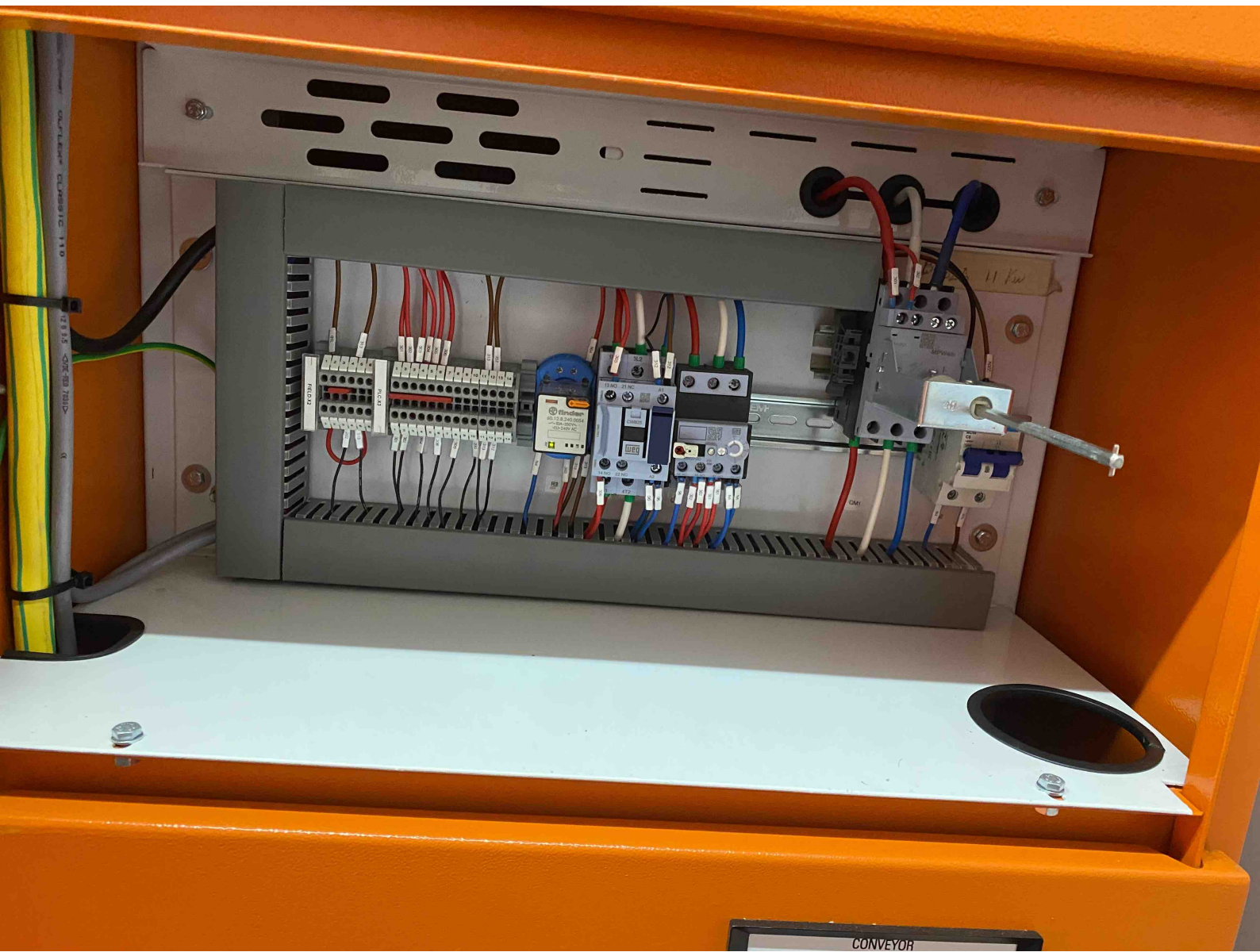
Green 'START' button and red 'STOP' button on the orange door.





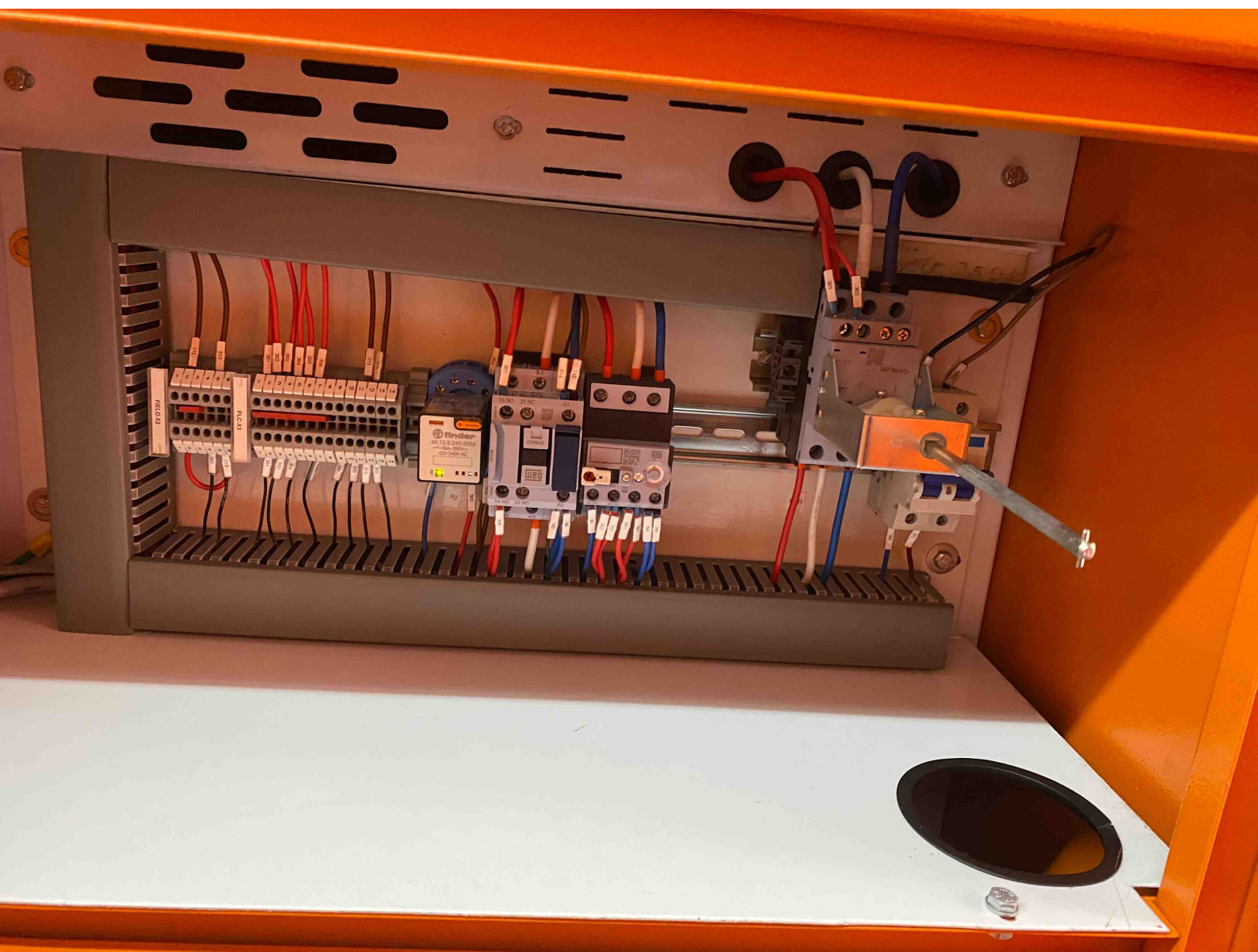


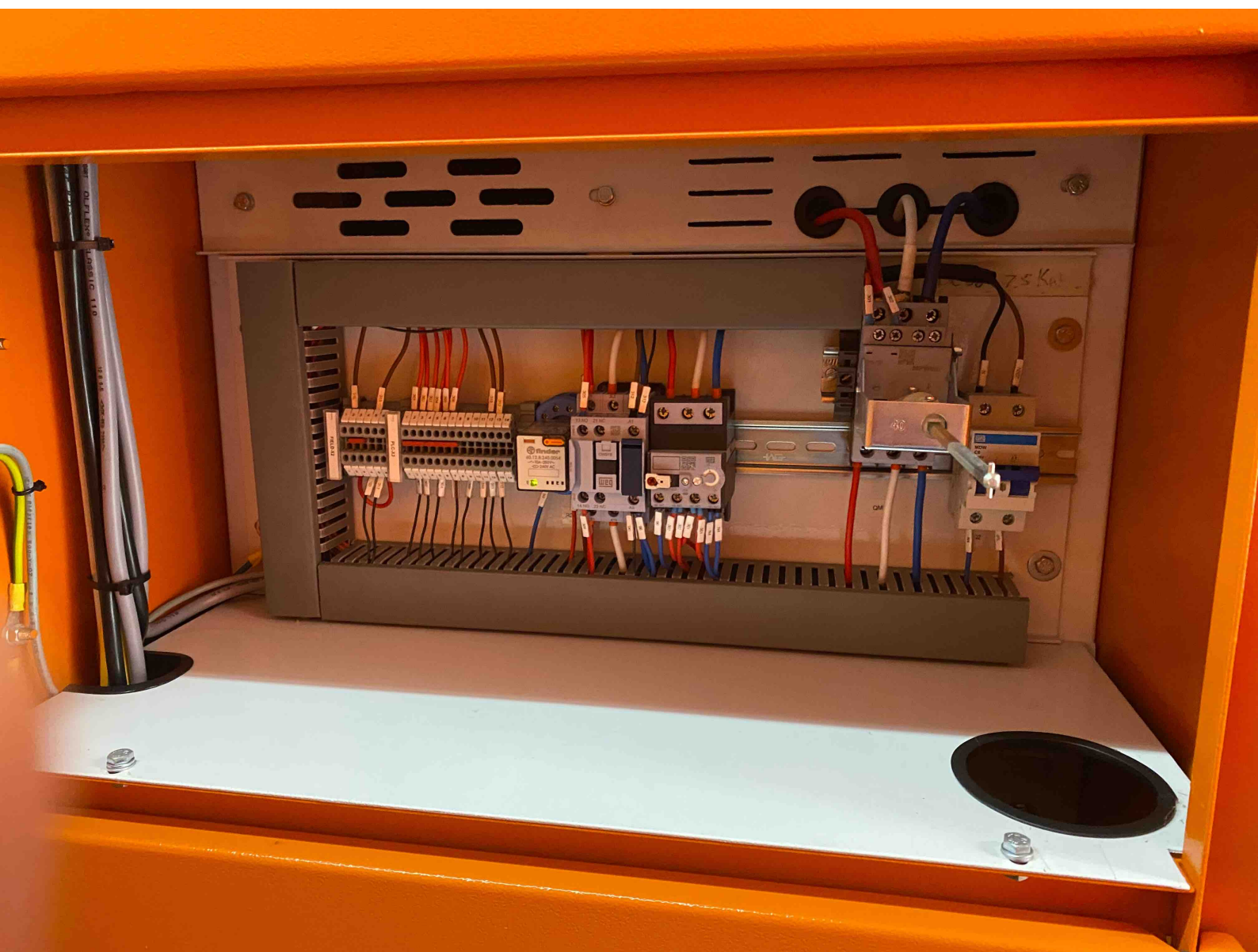




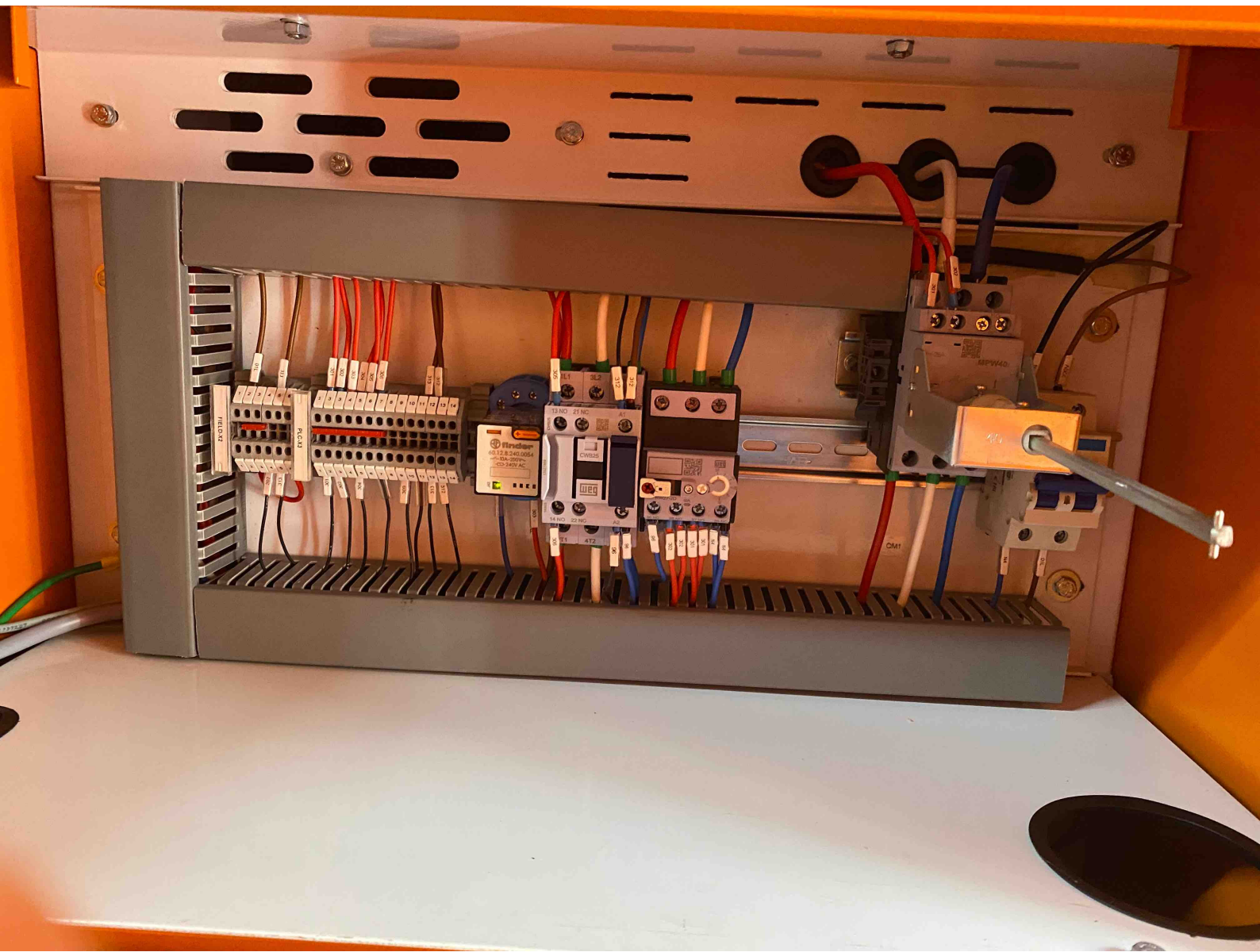


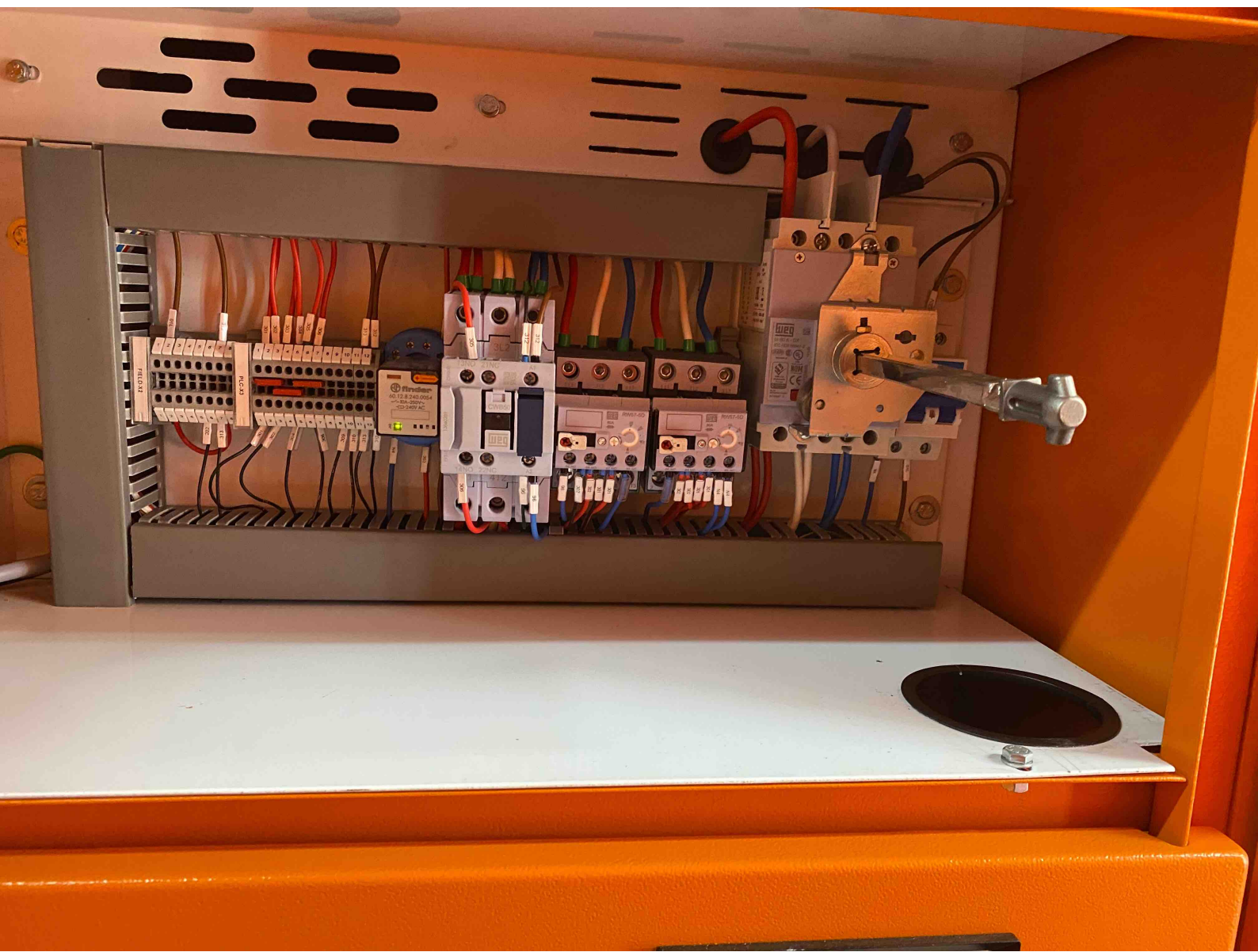






















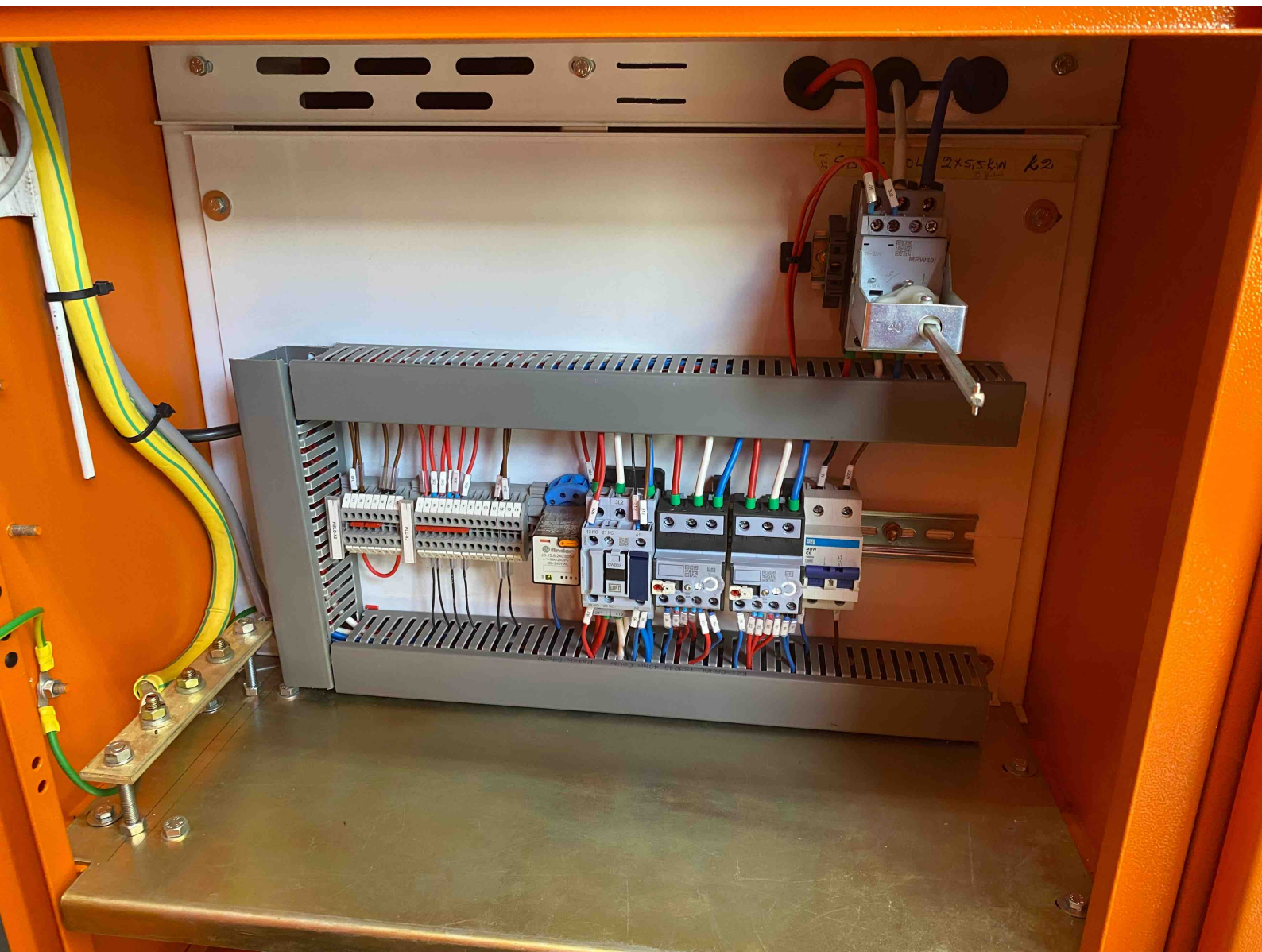
A terminal block with a red label '40' is mounted on the top right of the panel. It has four screw terminals on top and four on the bottom. Red, blue, and black wires are connected to the terminals.



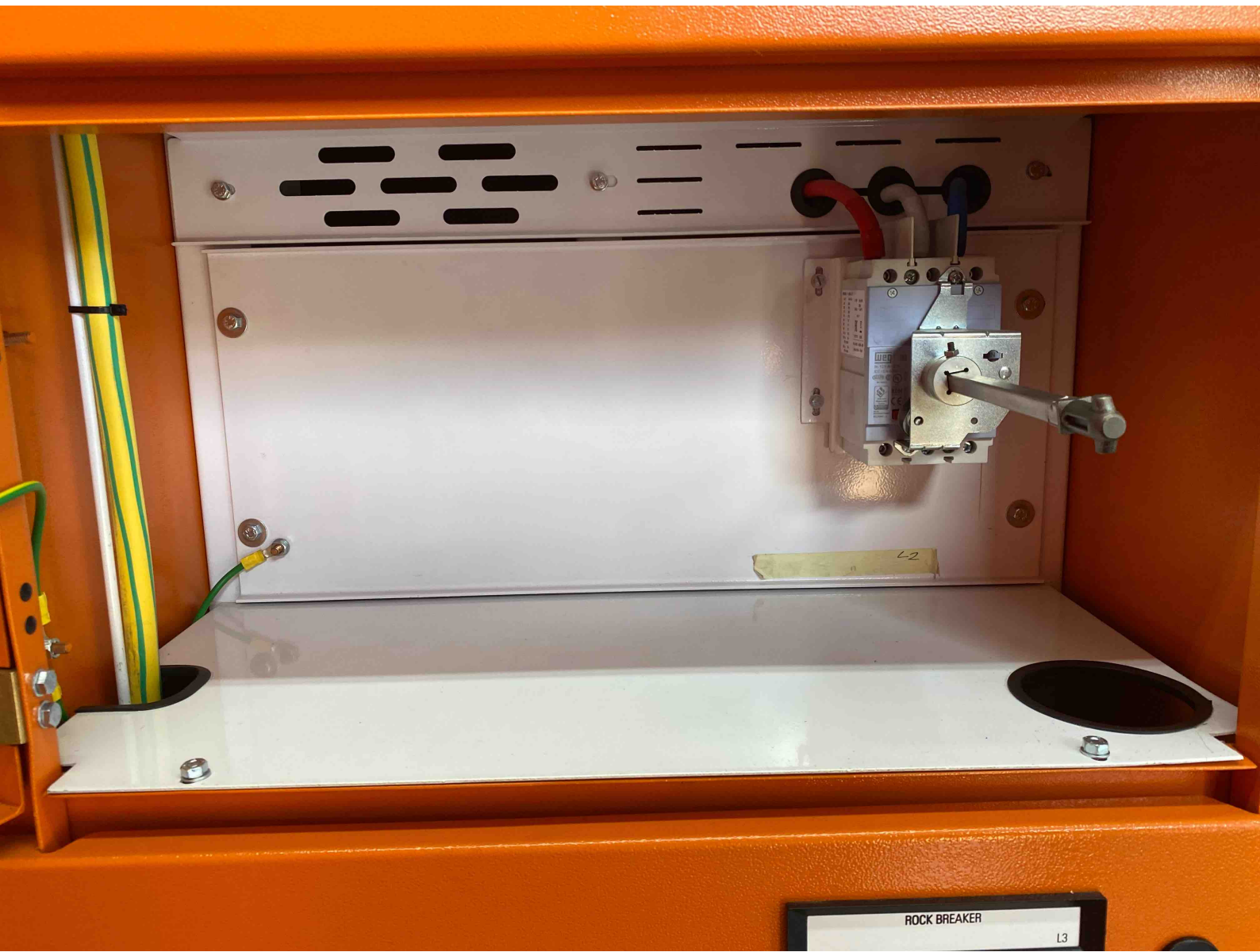
A grey Weq CFW 500 Vector Inverter is mounted in the center of the panel. It features a control panel with a small LCD screen, a 'BACK ESC' button, an 'ENTER MENU' button, and a central navigation pad with up, down, and left arrows. Below the navigation pad are 'LOC TEST' and 'STOP' buttons. The brand name 'Weq' and model 'CFW 500 VECTOR INVERTER' are printed on the front. A warning label is visible at the bottom of the unit.



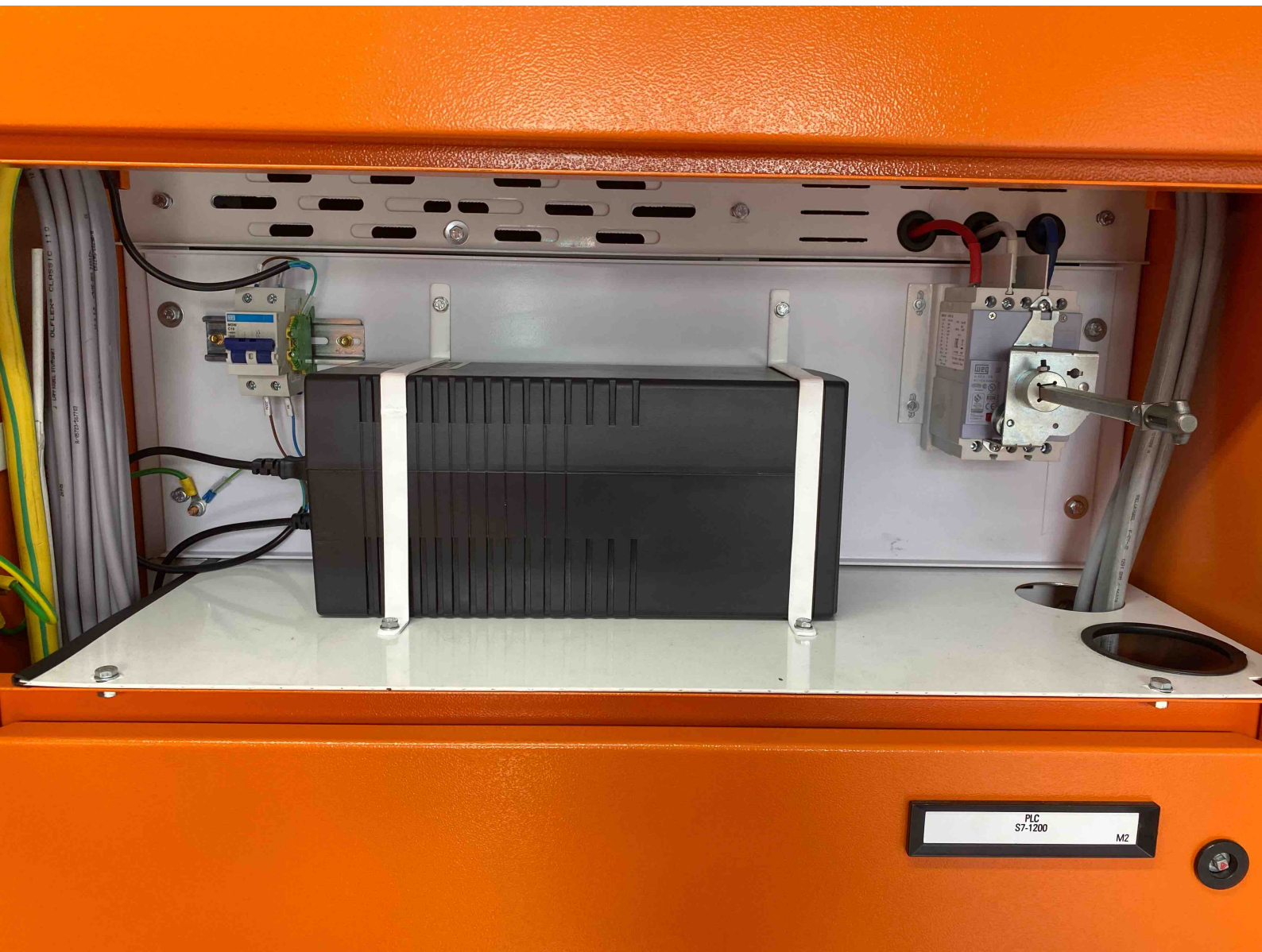
A terminal block and other electrical components are mounted in a lower section of the panel. The terminal block has multiple rows of terminals with various colored wires (red, blue, black, white) connected. To the right of the terminal block are several blue and grey electrical components, possibly relays or contactors, with their own wiring.











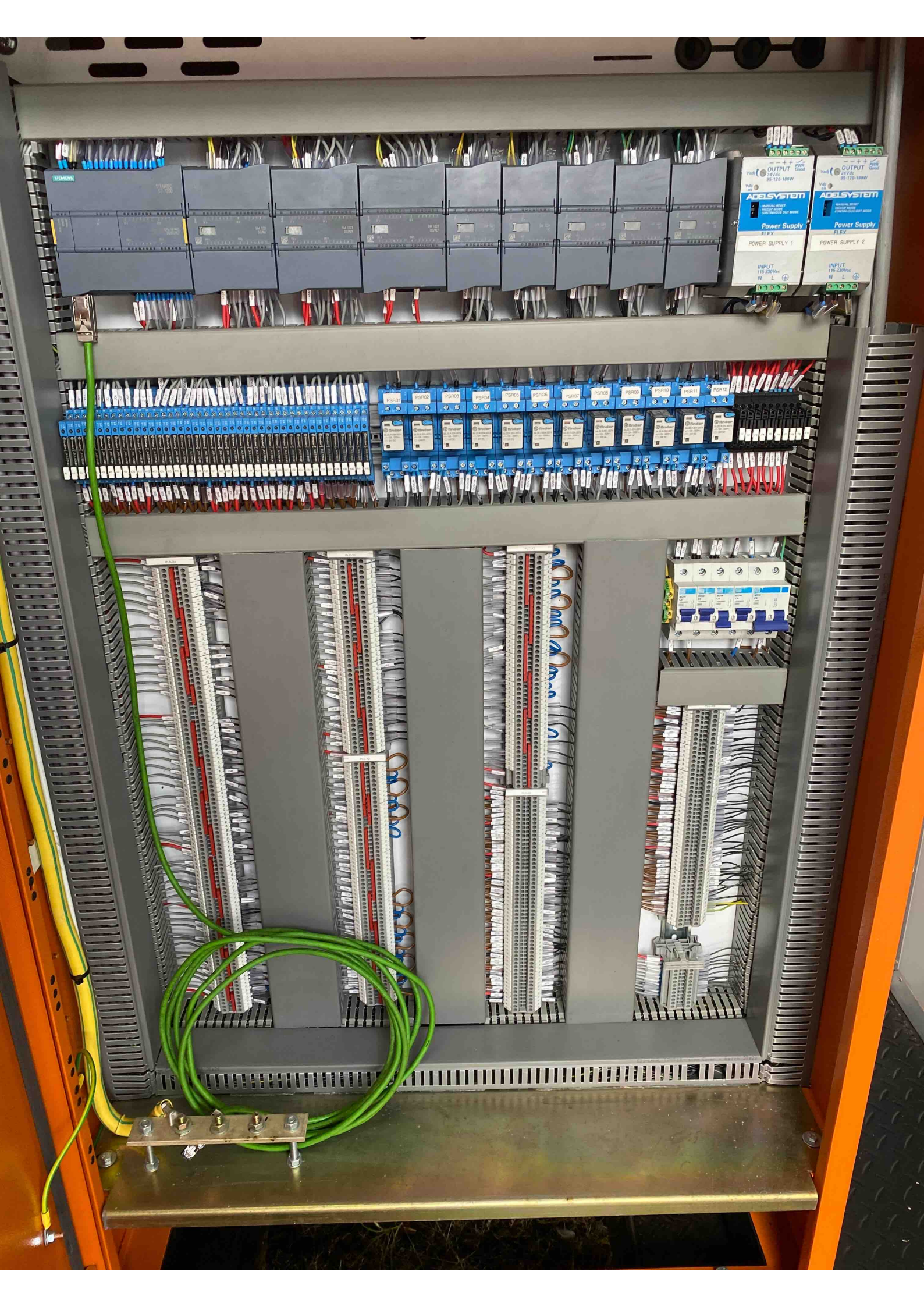
PLC
S7-1200
M2



ALTO



PSS



SIEMENS terminal blocks with various colored wires (blue, red, grey) connected to them.

ABB SYSTEM FLEX Power Supply 1 and Power Supply 2 units. Both have an output of 24VDC, 95-120-180W. Power Supply 1 has an input of 115-230VAC, N L. Power Supply 2 has an input of 115-230VAC, N L.

Row of blue PSR modules (PSR01 to PSR12) with numerous wires connected to their terminals.

Vertical terminal blocks containing a dense array of wires, organized into several columns.

Three blue and white circuit breakers mounted on a rail.

Terminal plate with four screws and a green cable looped around it.