







SUB-STATION

<p>UNAUTHORISED ENTRY PROHIBITED</p> 	<p>WARNING ALL UNAUTHORISED PERSONS ARE PROHIBITED FROM HANDLING OR INTERFERING WITH ELECTRICAL APPARATUS</p> 	<p>ELECTRICAL SUB-STATIONS PROCEDURES IN CASE OF FIRES.</p> <p>(NO. 1 ONLY APPLIES TO OPERATING STATS)</p> <p>1. IMMEDIATELY NOTIFY THE OFFICER FORWARD ELECTRICAL OR DEPT ELECTRICAL.</p> <p>2. THE RESPONSIBLE PERSON IMMEDIATELY SHUT OFF ELECTRICAL POWER TO THE STAT AND ISOLATE THE STAT FROM THE MAINS SUPPLY BY OPERATING THE CUT-OUTS.</p> <p>WATER MUST NEVER BE USED.</p> <p>ISOLATE AND OPERATIONS MUST BE CONDUCTED IN ACCORDANCE WITH THE RELEVANT SAFETY RULES AND PROCEDURES. DO NOT ATTEMPT TO REPAIR OR MAINTAIN ELECTRICAL APPARATUS UNTIL THE STAT IS COMPLETELY ISOLATED FROM THE MAINS SUPPLY AND THE STAT IS COMPLETELY DE-ENERGISED.</p>
<p>CARDIO PULMONARY RESUSCITATION (FIRST AID TREATMENT FOR ELECTRICAL ACCIDENTS)</p>		
		







L

DANGER LIVE BUSBARS
ISOLATE SUPPLY BEFORE
REMOVING COVERS.

NOT
TOUCH
SUPPLIED FROM BUS STATION
TRIP

Five analog gauges and a digital display showing 554, 588, and 559.

ABW circuit breaker with a red stop button and a green start button.





SUB-STATION

UNAUTHORISED ENTRY PROHIBITED	WARNING ALL UNAUTHORISED PERSONS ARE PROHIBITED FROM HANDLING OR INTERFERING WITH ELECTRICAL APPARATUS	ELECTRICAL SUB-STATIONS PROCESSED IN CASE OF FIRE NO. 1 ONLY APPLIES TO OPERATING STAFF
--------------------------------------	--	---

CARDIO PULMONARY RESUSCITATION
(FIRST AID TREATMENT FOR ELECTRICAL ACCIDENTS)



WATER MUST NEVER BE USED

NEVER USE EXTINGUISHERS ON ELECTRICAL FIRES













M

DANGER LIVE BUSBARS
ISOLATE SUPPLY BEFORE
REMOVING COVERS

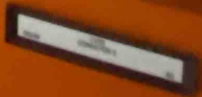






B

DANGER LIVE BUSBARS
ISOLATE SUPPLY BEFORE
REMOVING COVERS







WARNING
UNAUTHORISED
PERSONS ARE
PROHIBITED FROM
HANDLING OF
INTERFERING WITH
ELECTRICAL APPARATUS
RESUSCITATE
ELECTRICAL ACCIDENTS



115
115
115



115
115
115







DANGER
525V
UNAUTHORIZED HANDLING
OR INTERFERENCE WITH
ELECTRICAL APPARATUS
IS PROHIBITED









1001 3000
12-0119

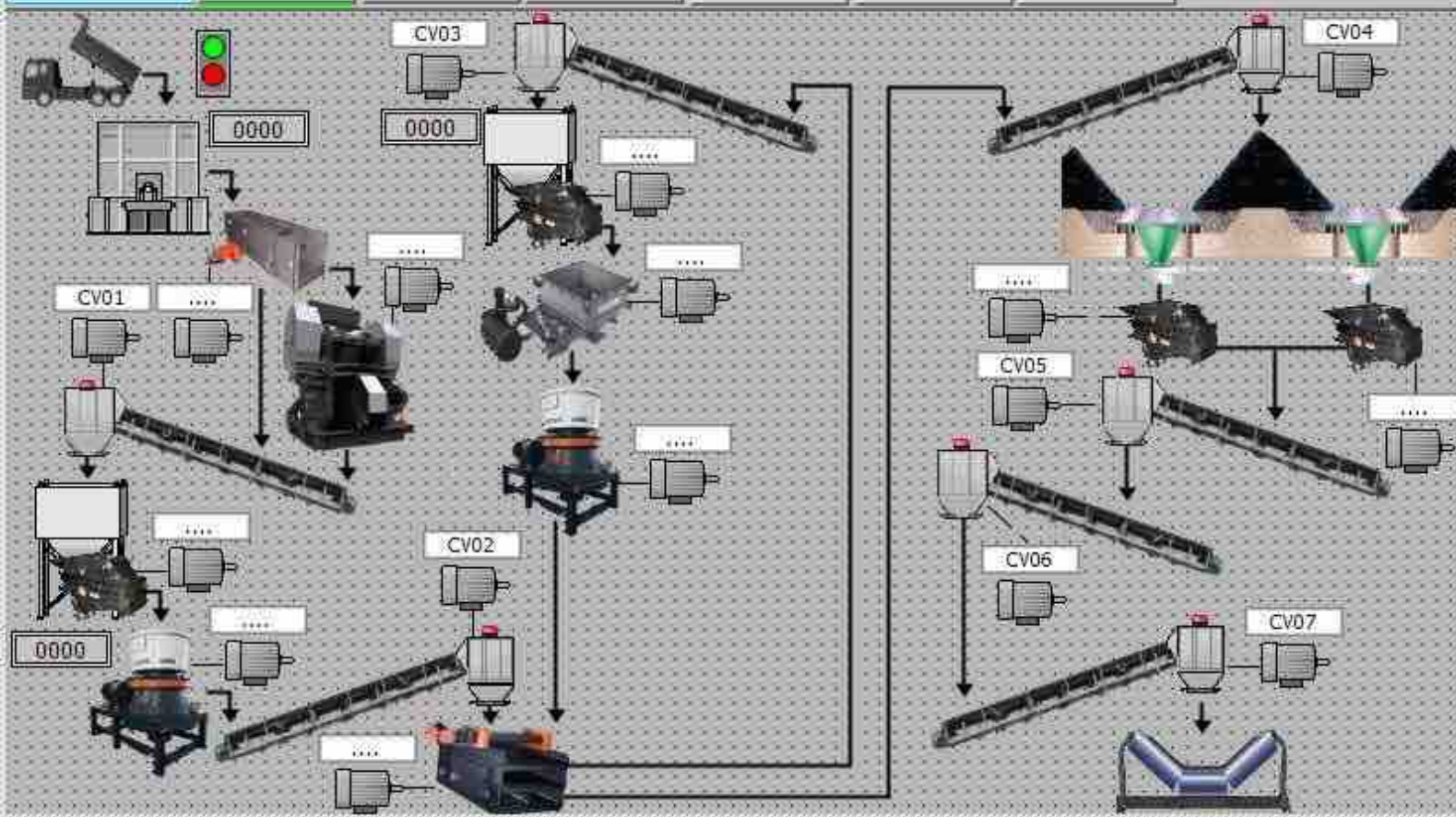


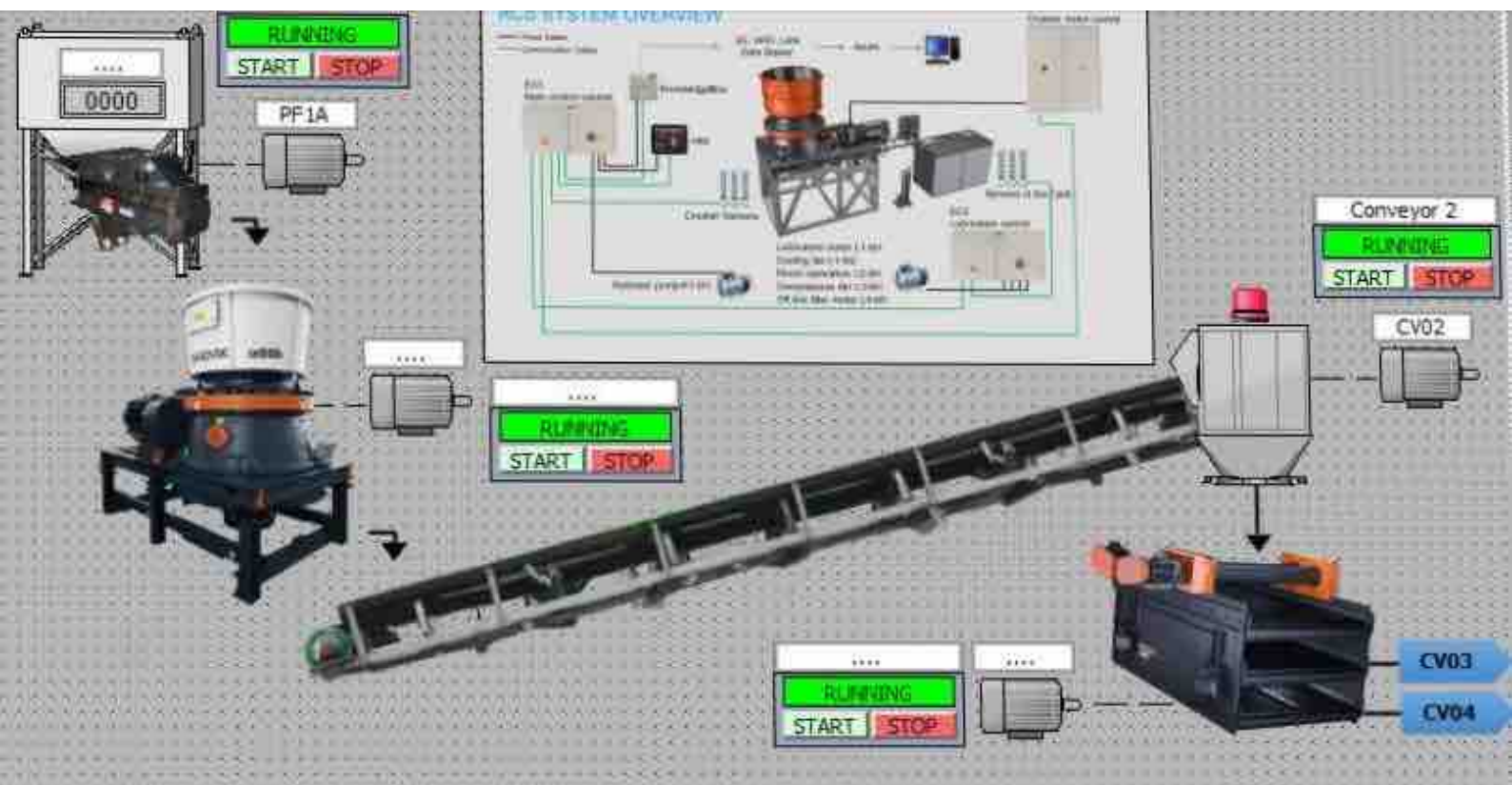


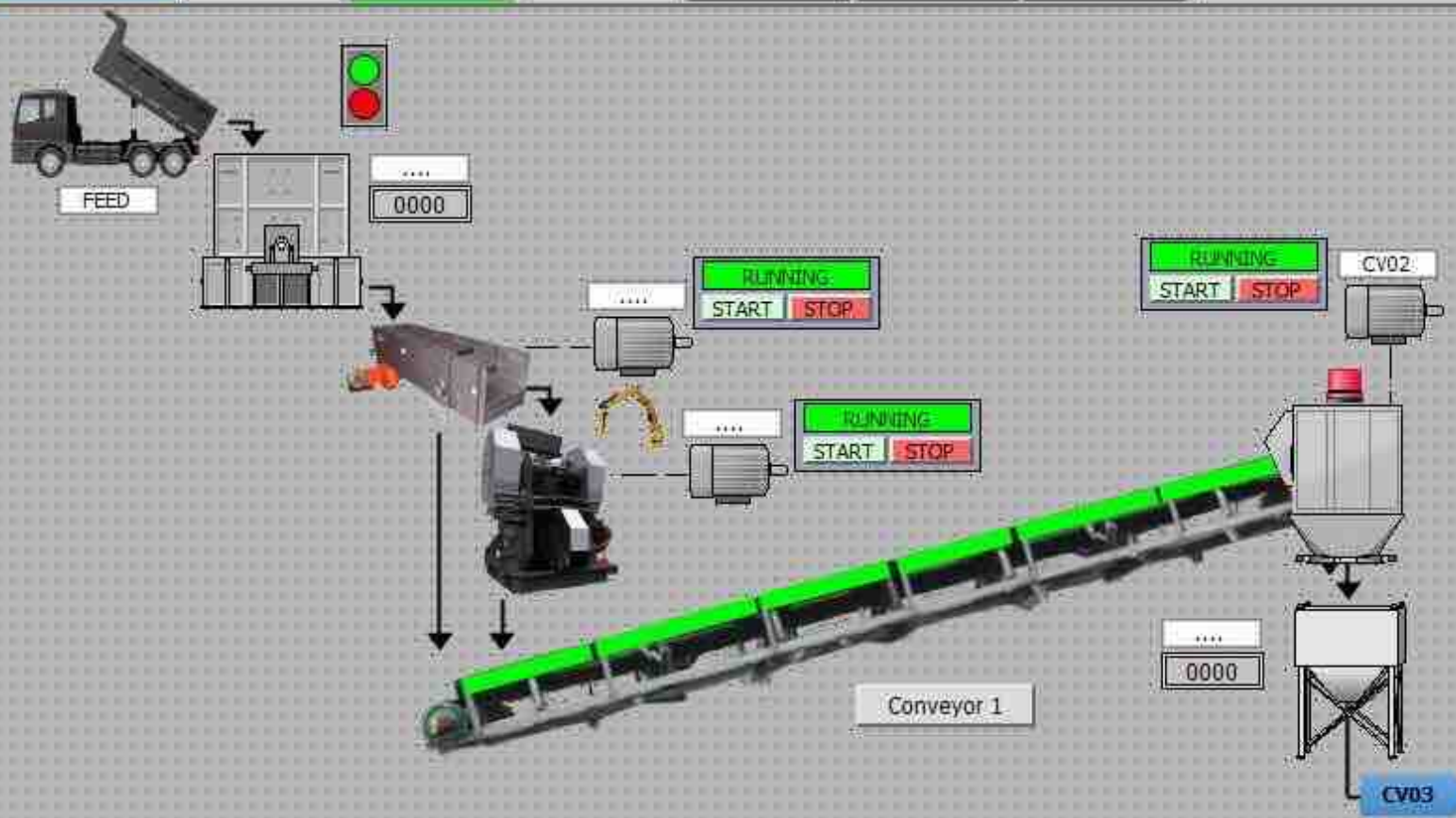


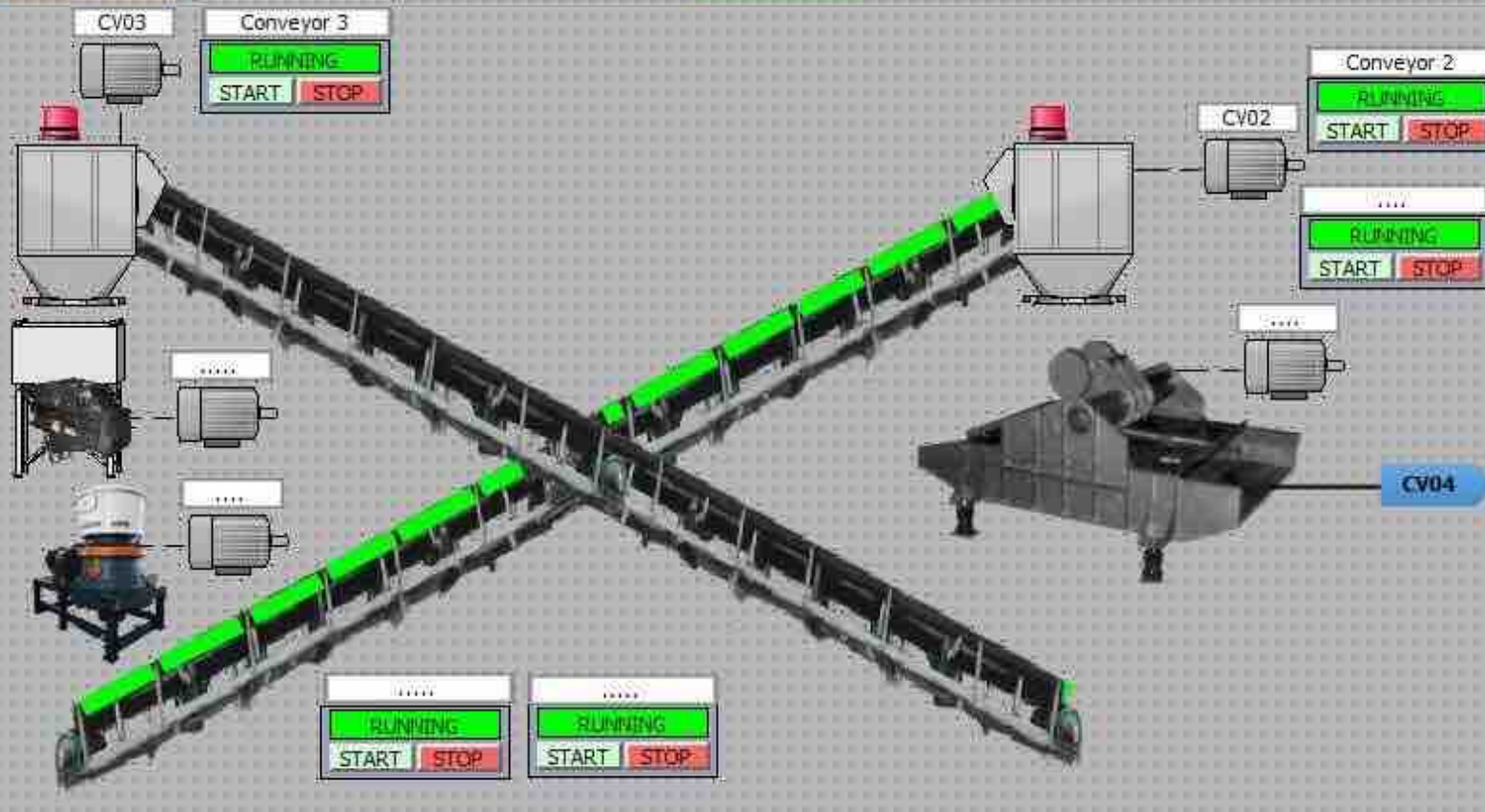












ACS SYSTEM OVERVIEW

— Power Cables
— Communication Cables



SEC 3

